

DIST	COUNTY	ROUTE	POST MILES TOTAL PROJECT	SHEET NO.	TOTAL SHEETS

REGISTERED CIVIL ENGINEER

October 5, 2007
PLANS APPROVAL DATE

Tillot Satter
No. C42892
Exp. 03-31-08
CIVIL

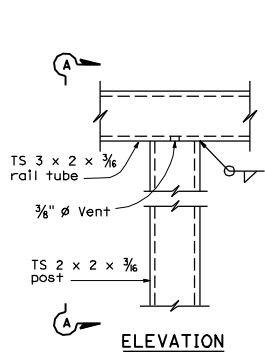
The State of California or its officers or agents shall not be responsible for the accuracy or completeness of electronic copies of this plan sheet.

REGISTERED PROFESSIONAL ENGINEER
STATE OF CALIFORNIA

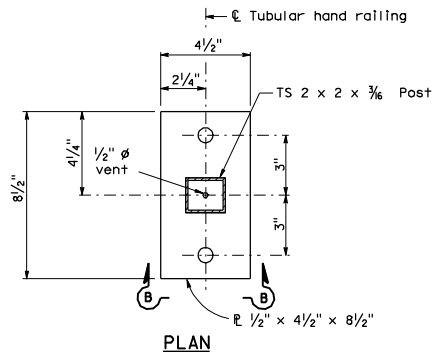
To accompany plans dated _____

SECTION E-E

ELEVATION

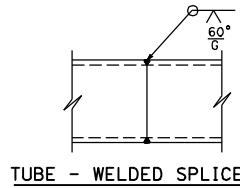


ELEVATION

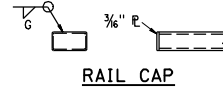


PLAN

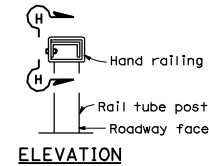
This plate detail is restricted to Tubular hand railing (TS 2 x 2 x 3/8 post)



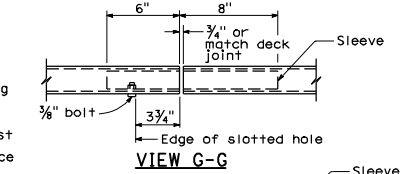
TUBE - WELDED SPLICE



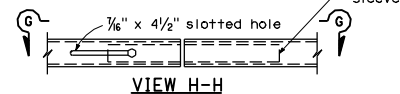
RAIL CAP



ELEVATION



VIEW G-G

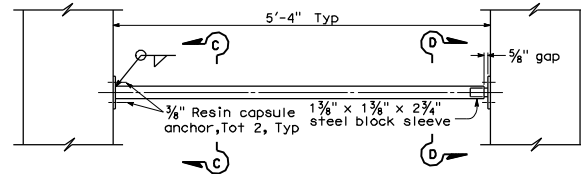


VIEW H-H

Tack weld 3/8" nut inside of sleeve for 3/8" Hex bolt with lock washer, See Note 6

1/2" diameter holes near and far side of sleeve formed of 3/8" bent thus [] for sliding fit inside of rail tube

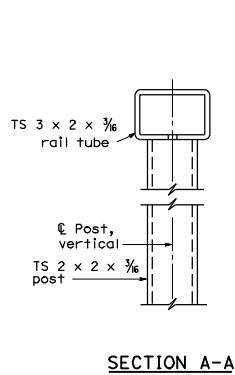
SLEEVE TUBE SPLICE DETAIL



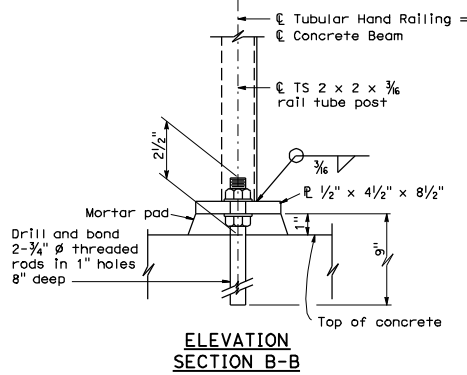
LOWER RAIL DETAIL

NOTES:

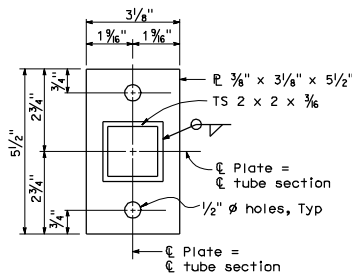
- Galvanize rail assembly after fabrication.
- Posts shall be normal to railing.
- Tube splices shall be located in the tubes spanning deck or wall joints. Increase joint width in tubes to match expansion joint width and increase sleeve length accordingly.
- Top rail tube shall be continuous over not less than two posts except a short length is permitted near deck or wall joints, electroliners, or other rail discontinuities.
- See project plans for limits of Tubular Hand railing.
- 3/8" nut tack welded to sleeve may be replaced by drilled and tapped hole in sleeve.



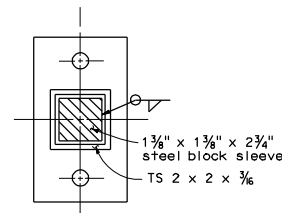
SECTION A-A



ELEVATION SECTION B-B



SECTION C-C



SECTION D-D

TUBULAR RAILING CONNECTION DETAILS

See Section C-C for details not shown RSP B11-64 DATED OCTOBER 5, 2007 SUPERSEDES STANDARD PLAN B11-64 DATED MAY 1, 2006 - PAGE 280 OF THE STANDARD PLANS BOOK DATED MAY 2006.

STATE OF CALIFORNIA
DEPARTMENT OF TRANSPORTATION
**CONCRETE BARRIER
TYPE 80SW
(SHEET 3 OF 3)**

NO SCALE

REVISED STANDARD PLAN RSP B11-64